



# 2020 MEMBER ASSOCIATION CATEGORISATION

***STATICAL ANALYSIS:***

- By Criteria***
- By Continent***

# INTRODUCTION

In alignment with new ITTF Strategic Plan directives, the **Member Association Categorisation was launched in 2018** with the aim to *set up a more objective and needs-based approach primarily in defining how the Continental Development funding should be split among the Continents.*

On the operational side the Categorisation was also used to define the type of support that each Member Association (MA) is eligible to receive through the CDP.

The Categorisation is a living, breathing and constantly evolving model that is updated on biennial basis. In the first two editions we have only used *in-house data for the Technical Criteria* (Competitions, URC, PTT, HPD), mainly due to the lack of relevant and reliable MA data, for instance number of (registered) player/clubs, number of (licensed) coaches, organizational structure, (good) governance, national competitions system and many more that would help us to develop a more comprehensive MA Development & Categorisation model.

Nevertheless, the newly introduced concept was highly appreciated by the MAs and also by the CFs, which motivated the HPD Team to continue working on this tool, aiming to expand and improve the set criteria and also to review the already used one.

**This said we are pleased to present to you hereafter the ITTF 2020 Member Association Categorisation.**

### A) Technical:

- **A1 Activity Criteria** – number of (senior) players participating at ITTF sanctioned events; unique players & excluding when hosting events  
**NEW:** *Cat. 4A, Cat. 4B*
- **A2 Quality Criteria** – players on the (senior) WRL:  
**NEW:** *Premium Cat. & Cat. 4A & Cat 4B*
- **A3 Junior Development** – activity/participation at ITTF sanctioned youth events; unique players & excluding when hosting events  
**NEW:** *HP Program Participation (U12, U15, U18)*
- **A4 Para Table Tennis** – activity/participation at international PTT events; unique player & excluding when hosting events  
**NEW:** *3 positions in Index Value*

### B) Match Officials & Events:

- **B1 Match Officials** – certified International Umpires  
**NEW:** *3 positions in Index Value*
- **B2 Hosting of ITTF events** – **NEW CRITERIA**

### C) Demographics:

- **C1 Population** – segmentation of MAs (countries and territories) by population
- **C2 Human Development Index** – composite index considering life expectancy, education and GDP per capita indicators

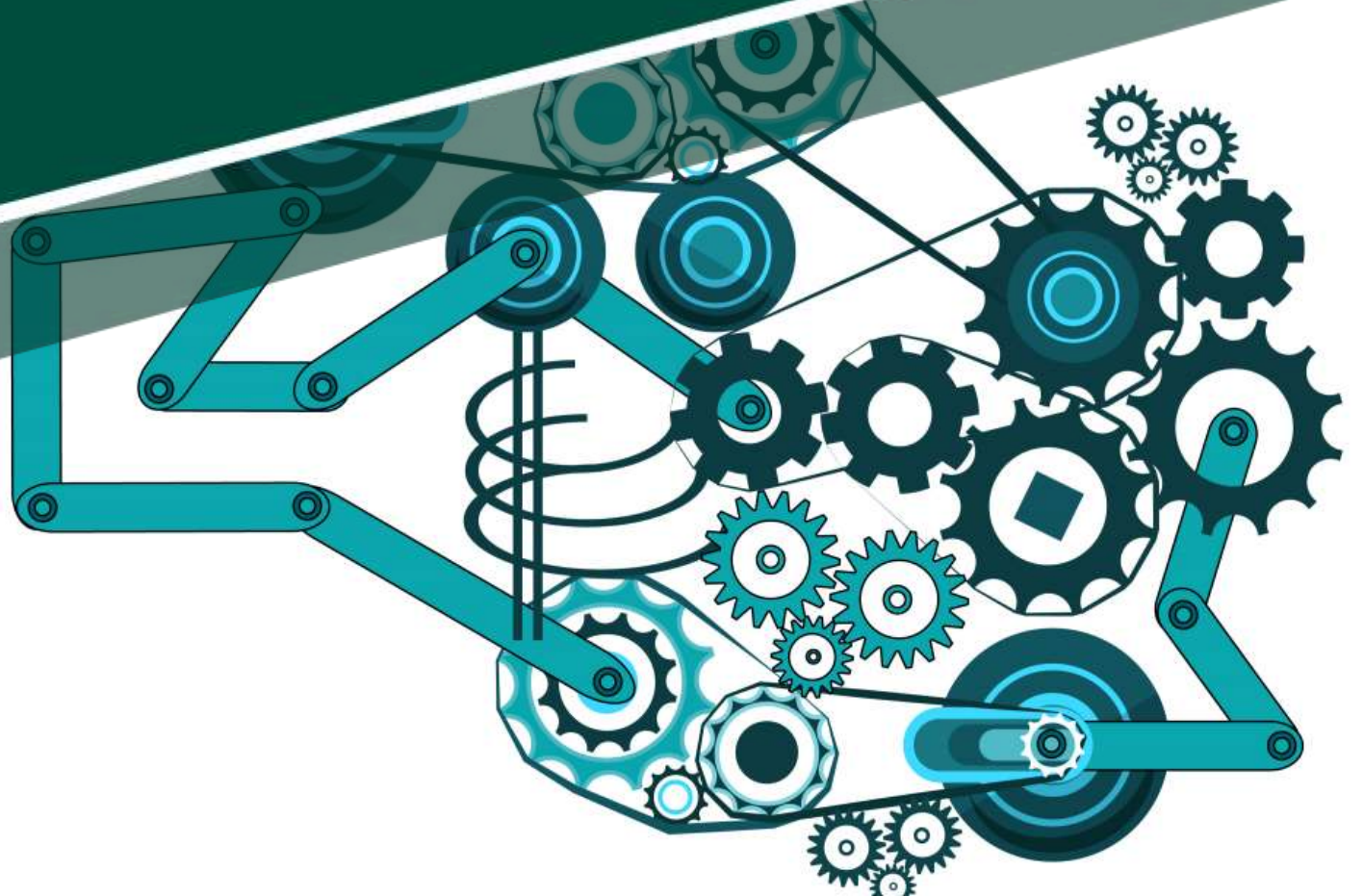
### D) Membership:

- **D1 Years of ITTF Membership**

# REVIEW PROCESS' NOVELTIES

- If a MA scores 0 points in all Technical Criteria (A1, A2, A3 and A4) it is automatically considered as Inactive as it means it didn't participate at any sanctioned events (consequently has no players on the WRL), didn't take part in any development activities and is not active within PTT, whereby both genders were observed.
- The gender aspect is observed whenever possible and the final number of points attributed is the average of the number of points for each gender, whereby the gender aspect has also been added for PTT and Match Officials.
- In order to give the needed relevance to the technical aspect a weight was used for the 4 sets of criteria within the group A.
- When a MA is hosting an event, the participation figures are not reflecting players from the hosting MA.
- Only unique players are considered for a period of 2 years, i.e. 2018 and 2019.

# ANALYSIS BY CRITERIA



# A1 TECHNICAL – PLAYERS ACTIVITY

<i>Number of unique players participating at ITTF sanctioned events; excl. when host</i>	WOMEN		MEN	
Index Value:	2020	%	2020	%
Cat 1 (>15 players)	13	6%	21	9%
Cat 2 (6-14 players)	57	25%	61	27%
Cat 3 (3-5 players)	39	17%	46	20%
Cat 4A (1-2 players)	25	11%	24	11%
Cat 4B (0 players)	92	41%	74	33%

# A2 TECHNICAL – PLAYERS QUALITY

<i>Number of unique players players on the (senior) WRL; excl. when the only points are from home event</i>	WOMEN		MEN	
Index Value:	2020	%	2020	%
Cat 1 (2 or more players in top 50)	12	5%	16	7%
Cat 1 Premium (Medals at World Title events & Olympic Games)	8	-	11	-
Cat 2 (2 or more players in top 150)	28	13%	23	10%
Cat 3 (2 or more players in top 300)	27	12%	26	12%
Cat 4A (over 301 or 1 within 300)	75	33%	102	45%
Cat 4B (No ranked players)	84	37%	59	26%

# A3 TECHNICAL - JUNIOR DEVELOPMENT

<i>MAAs/Teams or unique U18, U15, U12 players</i>	WOMEN		MEN	
	2020	%	2020	%
Cat 1 (WJTTC Top 16 )	12	5%	12	5%
Cat 2 (WJC and Cont. Youth; 15 players or more)	20	9%	35	15%
Cat 3 (HP Program Participation)	19	8%	10	4%
Cat 4A (Regional events, Reg. And Cont. Hopes)	55	24%	46	20%
Cat 4B (Poor or no activity)	120	53%	123	54%



# A4 TECHNICAL – PARA TABLE TENNIS

<i>Unique active para players at international PTT events; excl. when host</i>	<b>WOMEN</b>		<b>MEN</b>	
<b><i>Index Value:</i></b>	<b>2020</b>	<b>%</b>	<b>2020</b>	<b>%</b>
Cat 1 (Active at Continental/International PTT events; more than 4 players)	32	14%	57	25%
Cat 2 (Active at Continental/International PTT events; up to 4 players)	38	17%	39	17%
Cat 3 (Not active at Continental/International PTT events)	156	69%	130	58%

# B MATCH OFFICIALS AND EVENTS

<i>B1 MATCH OFFICIALS: Certified International Umpires</i>	WOMEN		MEN	
	2020	%	2020	%
Index Value:				
Cat 1 (Has more than 11 IU)	30	13%	90	40%
Cat 2 (Has up to 11 IU)	92	41%	56	25%
Cat 3 (No IU)	104	46%	80	35%

<i>B2 EVENTS: Hosting of ITTF Events</i>	2020	%
Index Value:		
Cat 1 (World events (WTTC, Cups, WTGF & WT))	14	6%
Cat 2 (Reg./Cont. Championships & Cups + WJTTC, WJC, Challenge Series)	54	24%
Cat 3 (Not hosting)	158	70%

# C DEMOGRAPHICS

C1 POPULATION		
Index Value:	2020	%
Cat 1 (>1 M)	64	28%
Cat 2 (1-10M)	74	33%
Cat 3 (10-100M)	74	33%
Cat 4 (>100M)	14	6%

C2 HUMAN DEVELOPMENT INDEX		
Index Value:	2020	%
Cat 1 (Very high)	79	35%
Cat 2 (High)	72	32%
Cat 3 (Medium)	37	16%
Cat 4 (Low)	38	17%

# D MEMBERSHIP

D YEARS OF ITTF MEMBERSHIP	
Index Value:	2020
Cat 1 (+11 years)	207
Cat 2 (0-10 years)	19

# MANAGEMENT AND GOVERNANCE

ELIGIBILITY TO ACCESS CD FUNDING*			
Continent:	YES	NO	% YES
<b>TOTAL:</b>	<b>32</b>	<b>194</b>	<b>14%</b>
Africa	5	49	9%
Asia	10	35	22%
Europe	CDP managed by CF; MAs may not have been prompted to submit the requested documentation.		
Latin America	17	23	42%
North America	1	4	20%
Oceania	CDP managed by CF; MAs may not have been prompted to submit the requested documentation.		

MAs were asked to provide the following:

- Constitution
- List of elected Officials
- Minutes of the last AGM
- National Championships Results-book

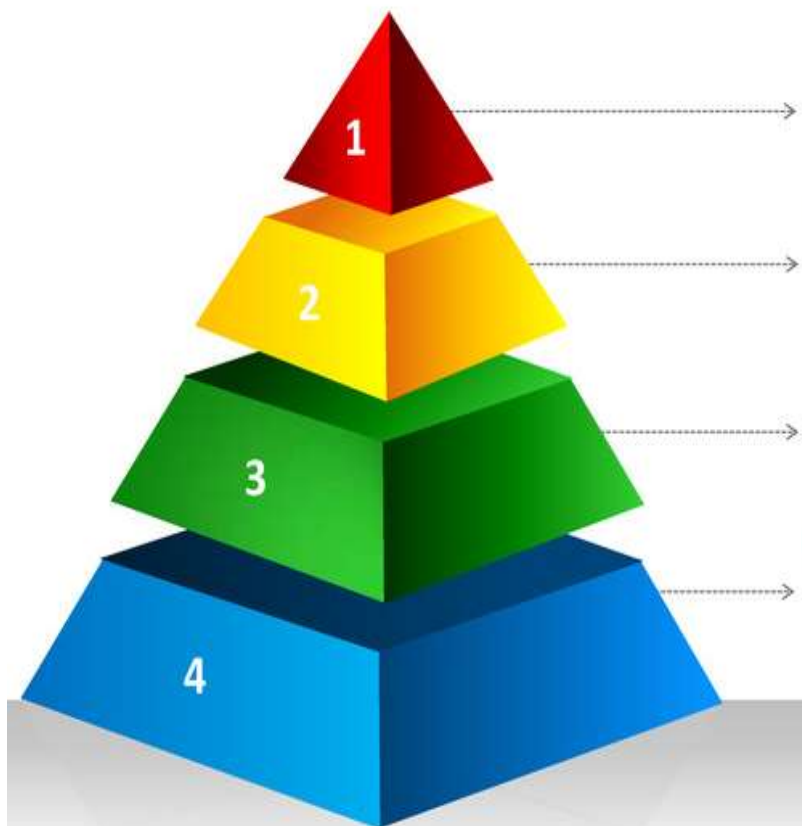
*\* The criteria was relaxed and instead of being mandatory it was included in the MA Bonus incentive criteria.*

# 2018-2020 UPDATE OUTCOME

**Cat. changed for 67 MAs:**

38 upgraded

29 downgraded



2018		2020 (new criteria)		2018 VS 2020
MAAs	%	MAAs	%	
27	12%	25 <i>(including 11 Cat.1 Premium)</i>	11%	-1%
38	16,8%	37	16%	-0.8%
57	25,2%	74	33%	+7.8%
104	46%	90 <i>(including 44 in Cat 4A-Active &amp; 46 in Cat 4B - Inactive)</i>	40%	-6%

# ANALYSIS BY CONTINENT



# AFRICA (54 MAs)

MA Category	2018	2020	%
Category 1	-	-	-
<i>Cat. 1 - Premium</i>	-	-	-
Category 2	2	5	+ 5.5 %
Category 3	6	10	+ 7.4%
Category 4	46	39	- 12,9 %
<i>Cat. 4A - Active</i>	-	19	-
<i>Cat. 4B - Inactive</i>	-	20	-



## Cat. changed for 12 MAs:

- 11 upgraded (CIV, COD, GHA, MAD, MAR, NGR, SEY, RSA, TOG, TUN, UGA)
- 1 downgraded (LBA)



# ASIA (45 MAs)

MA Category	2018	2020	%
Category 1	6	7	+2.2%
<i>Cat. 1 - Premium</i>	-	6	-
Category 2	8	6	-4.4%
Category 3	12	22	+22.3%
Category 4	19	10	-20%
<i>Cat. 4A - Active</i>	-	8	-
<i>Cat. 4B - Inactive</i>	-	2	-



## Cat. changed for 17 MAs:

- 13 upgraded (IND, INA, IRQ, KAZ, PRK, KGZ, LAO, NEP, OMA, PAK, PLE, PHI, TKM)
- 4 downgraded (BRU, JOR, LBN, MAC)

# EUROPE (58 MAs)



MA Category	2018	2020	%
Category 1	18	15	<b>-5%</b>
<i>Cat. 1 - Premium</i>	-	5	-
Category 2	21	17	<b>-6.9%</b>
Category 3	16	17	<b>+1.7%</b>
Category 4	3	9	<b>+10.3%</b>
<i>Cat. 4A - Active</i>	-	5	-
<i>Cat. 4B - Inactive</i>	-	4	-

## Cat. changed for 20 MAs:

- 2 upgraded (MDA, SRB)
- 18 downgraded (AND, ARM, BIH, CYP, EST, GEO, GIB, GGY, IMN, IRL, LAT, LIE, LUX, MNE, NED, POR, SLO, WAL)

# LATIN AMERICA (40 MAs)

MA Category	2018	2020	%
Category 1	1	1	-
<i>Cat. 1 - Premium</i>	-	-	-
Category 2	5	7	+5%
Category 3	14	18	+10%
Category 4	20	14	-15%
<i>Cat. 4A - Active</i>	-	6	-
<i>Cat. 4B - Inactive</i>	-	8	-



## Cat. changed for 10 Nas:

- 9 upgraded (BIZ, COL, ECU, GUY, HON, JAM, MEX, SKN, LCA)
- 1 downgraded (PER)

# NORTH AMERICA (5 MAs)

MA Category	2018	2020	%
Category 1	1	1	-
Cat. 1 - Premium	-	-	-
Category 2	1	1	-
Category 3	1	0	-20%
Category 4	2	3	+20%
Cat. 4A- Active	-	1	-
Cat. 4B - Inactive	-	2	-



**Cat. changed for 1 MA:**  
Downgraded (BER)

# OCEANIA (24 MAs)

MA Category	2018	2020	%
Category 1	1	1	-
<i>Cat. 1 - Premium</i>	-	-	-
Category 2	1	1	-
Category 3	8	7	<b>- 4.2%</b>
Category 4	14	15	<b>+4.2%</b>
<i>Cat. 4A - Active</i>	-	5	-
<i>Cat. 4B - Inactive</i>	-	10	-



## Cat. changed for 7 MAs:

- 3 upgraded (PLW, SOL, VAN)
- 4 downgraded (COK, GUM, NFK, TUV)

# Overall MA & CF Category

CONTINENT	Continent cat. 2018	Continent cat. 2020	# of MAs	Upgraded	Downgraded
Africa	4	4	54	11	1
Asia	2	2	45	13	4
Europe	1	1	58	2	18
Latin America	3	2	40	9	1
North America	2	2	5	0	1
Oceania	3	3	24	3	4
<b>TOTAL</b>	-	-	<b>226</b>	<b>38</b>	<b>29</b>

# 2020 MA Categorisation Overview

Cat.1	Africa	0																			
	Asia	7	CHN	HKG	IND	JPN	KOR	SGP	TPE												
	Europe	15	AUT	CRO	CZE	ENG	FRA	GER	HUN	ITA	POL	ROU	RUS	SRB	SVK	ESP	SWE				
	Latin America	1	CHI																		
	North America	1	USA																		
	Oceania	1	AUS																		
Cat.2	Africa	5	ALG	EGY	NGR	RSA	TUN														
	Asia	6	IRI	KAZ	PRK	MAS	QAT	THA													
	Europe	17	BLR	BEL	BUL	DEN	FIN	GRE	ISR	LTU	LUX	NED	NOR	POR	SLO	SUI	TUR	UKR	WAL		
	Latin America	7	ARG	BRA	COL	DOM	ECU	MEX	PUR												
	North America	1	CAN																		
	Oceania	1	NZL																		
Cat.3	Africa	10	CGO	CIV	COD	GHA	MAD	MAR	MRI	SEY	TOG	UGA									
	Asia	22	BRN	INA	IRQ	JOR	KUW	KGZ	LAO	LBN	MAC	MDV	MGL	NEP	OMA	PAK	PLE	PHI	KSA	SRI	
	Europe	17	AZE	BIH	CYP	EST	FRO	ISL	IRL	JEY	KOS	LAT	MKD	MLT	MDA	MON	MNE	SMR	SCO		
	Latin America	18	ARU	BAR	BIZ	CRC	CUB	ESA	GUA	GUY	HON	JAM	PAN	PAR	PER	SKN	LCA	TTO	URU	VEN	
	North America	0																			
	Oceania	7	FIJ	NCL	PLW	SOL	PYF	TGA	VAN												
Cat.4	Africa	39	ANG	BDI	BEN	BOT	BUR	CAF	CHA	CMR	CPV	COM	DJI	ERI	ETH	GAB	GAM	GBS	GEQ		
			GUI	KEN	LBA	LBR	LES	MAW	MLI	MOZ	MTN	NAM	NIG	RWA	SEN	SLE	SOM	STP	SSD		
			SUD	SWZ	TAN	ZAM	ZIM														
	Asia	10	AFG	BAN	BHU	BRU	CAM	MYA	SYR	TJK	TLS	YEM									
	Europe	9	ALB	AND	ARM	GEO	GIB	GRL	GGY	IMN	LIE										
	Latin America	14	AIA	ANT	BOL	BES	IVB	CAY	CUW	DMA	GRN	HAI	NCA	MAF	VIN	SUR					
	North America	3	BAH	BER	ISV																
Oceania	15	ASA	COK	GUM	KIR	MHL	FSM	NRU	NFK	NIU	MNP	PNG	SAM	TKL	TUV	WLF					

Cat. 1 Premium

Cat. 4 - Inactive

# THANK YOU FOR YOUR ATTENTION !



For more information, please contact our Continental Development Managers Team:

- Africa: Ramzi B.H Mabrouk [rmabrouk@ittf.com](mailto:rmabrouk@ittf.com)
- Asia: Yelena Druzhkova at [ydruzhkova@ittf.com](mailto:ydruzhkova@ittf.com)
- Europe: Neven Cegnar at [ncegnar@gmail.com](mailto:ncegnar@gmail.com)
- Latin America: Carlos Manuel Esnard Bolanos at [cesnard@ittf.com](mailto:cesnard@ittf.com)
- North America: Jasna Rather at [jrather@na.ittf.com](mailto:jrather@na.ittf.com)
- Oceania: Jessica Macaskill at [jmacaskill@ittfoceania.com](mailto:jmacaskill@ittfoceania.com)

Katarzyna Kubas, ITTF HPD Continental Development Manager  
Polona Cehovin, ITTF HPD Director

## - DISCLAIMER -

*This document, particularly the processed data that it contains is confidential and intended solely for the use of the individual or entity to whom they are addressed.*

*Disclosing, copying, distributing or taking any action in reliance on the contents of this document is strictly prohibited.*